

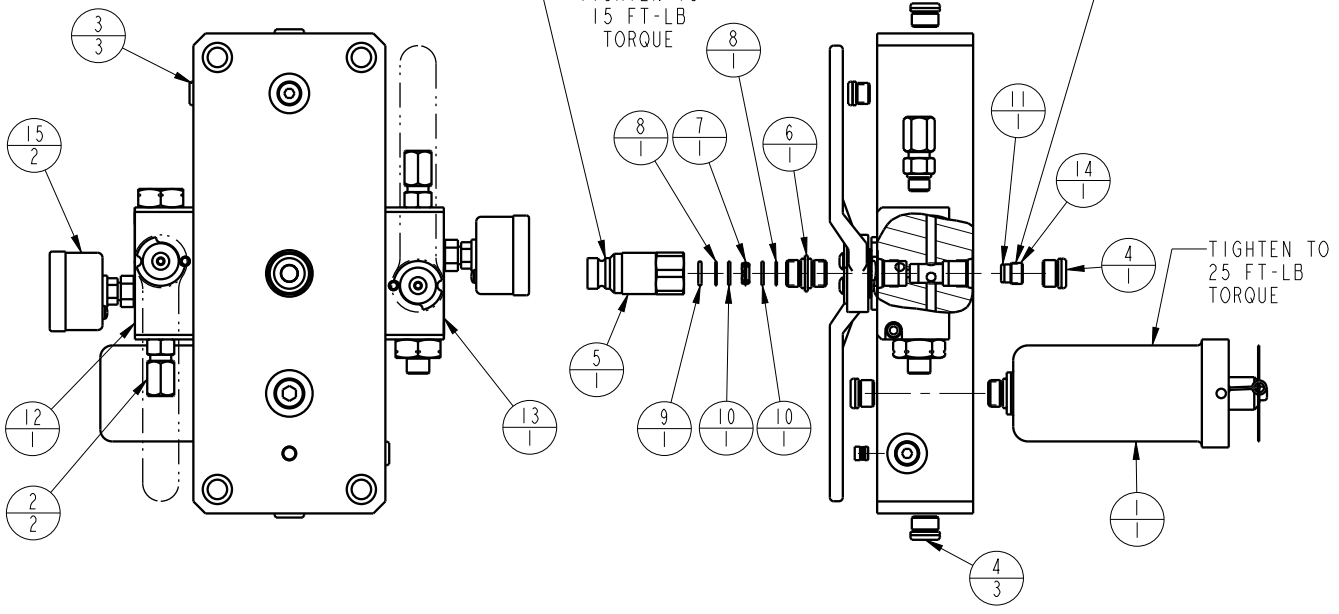
MODEL NO.			MODEL NAME	
56000402			ASSY, TOP PLATE, TWO SIDED, 750 PSI	
NO.	QTY	PART NO.	DESCRIPTION	FILTER KIT
1	1	10101602	ASSY, ACC, 3.6 CI, 750 PSI	NO
2	2	30000144	CONNECTOR, 1/4 FLRL TB - SAE 4	NO
3	3	30601144	PLUG, SOCH, SAE 4	NO
4	4	30601166	PLUG, SOCH, SAE 6	NO
5	1	30772760	COUPLER, QD, SAE 6, MALE, FLUSH	NO
6	1	30871166	ASSY, ADAPTER, SAE 6, MALE	NO
7	1	31050011	FILTER, DISC, SAE 6, 25 MICRON	YES
8	2	31050013	DIFFUSER, DISK, SAE 6	YES
9	1	39002009	O-RING, (-012)	YES
10	2	39054010	BU RING, (-012)	YES
11	1	55250001	O-RING, (-010)	NO
12	1	70101700	ASSY, VALVE, UNLOAD	NO
13	1	70101703	ASSY, VALVE, UNLOAD, BLEEDER	NO
14	1	70343792	VALVE, CHECK, SAE 4, 30 PSI	NO
15	2	72322155	GAUGE, PRESS, HYDR, 6000PSI, CBM, SAE 4, 1.66"	NO
N/A	N/A	62560004	KIT, FILTER, TP, SAE 6, 25 MICRON	NOTED
N/A	N/A	IS5604	INSTRUCTION SHEET	N/A

O-RING PROVIDED WITH CHECK VALVE

TIGHTEN CHECK VALVE TO 25 IN-LBS TORQUE
USE INSTALLATION TOOL 65600000

TIGHTEN TO 15 FT-LB TORQUE

TIGHTEN TO 25 FT-LB TORQUE



APPLY LUBRICANT TO ALL SEALS PRIOR TO INSTALLATION
DO NOT USE SILICONE TYPE LUBRICANTS.

PARTS LIST



VEKTEK, INC.
1334 E. SIXTH AVE. P.O. BOX 625
EMPORIA, KS. 66801 U.S.A.

ASSEMBLIES AFFECTED
56000402

PARTS LIST, ASSY, TOP PLATE, TWO SIDED, 750 PSI

G	4189	RELEASE	JDW	05/26/20
REV	IN ACCORDANCE WITH ECN	EFFECTIVE DATE	REVISED BY	DATE
DRW BY:	ABC	DRAWING STATUS: Released		
DATE:	XX-YY-ZZ	PRODUCTION APPROVED FOR RELEASED STATUS ONLY		

SIZE
A PL5614

REV
G

FORM FEG035_PL_ASIZE, REV. B

SHEET 1 OF 1

Vektek, Inc. 1334 East Sixth Ave. P.O. Box 625 Emporia, Ks. 66801 U.S.A.	Instruction Sheet	IS-	5604		
		REV:	A I.A.W. ECN 1352		
		BY/DATE:	M Say	08/01/05	
		APPR/DATE:	R. Hausler	10-4-05	
Title Operating Instructions: Two and Four Sided Top Plate Assemblies					

Read all instructions before operating

1. Shut off the power supply and release any pressure on the output line.
2. Close all valves on the top plate.
3. Connect the power supply to the top plate, through the quick disconnect coupling.
4. Open the valve on the fixture where the part will be changed out. Change out the part and close the valve.
5. Pressurize the fixture by holding the pendant rocker switch in the clamp position. After the system is pressurized, release the switch.
6. Rotate the tombstone to the next fixture to be loaded.
7. Repeat steps four, five and six until all fixtures are reloaded.
8. Disconnect the power supply from the tombstone.

NOTE:

Tombstone fixtures may be loaded or unloaded independently, without loss of pressure to adjacent fixtures.